



Shoreline Village Destin, Florida



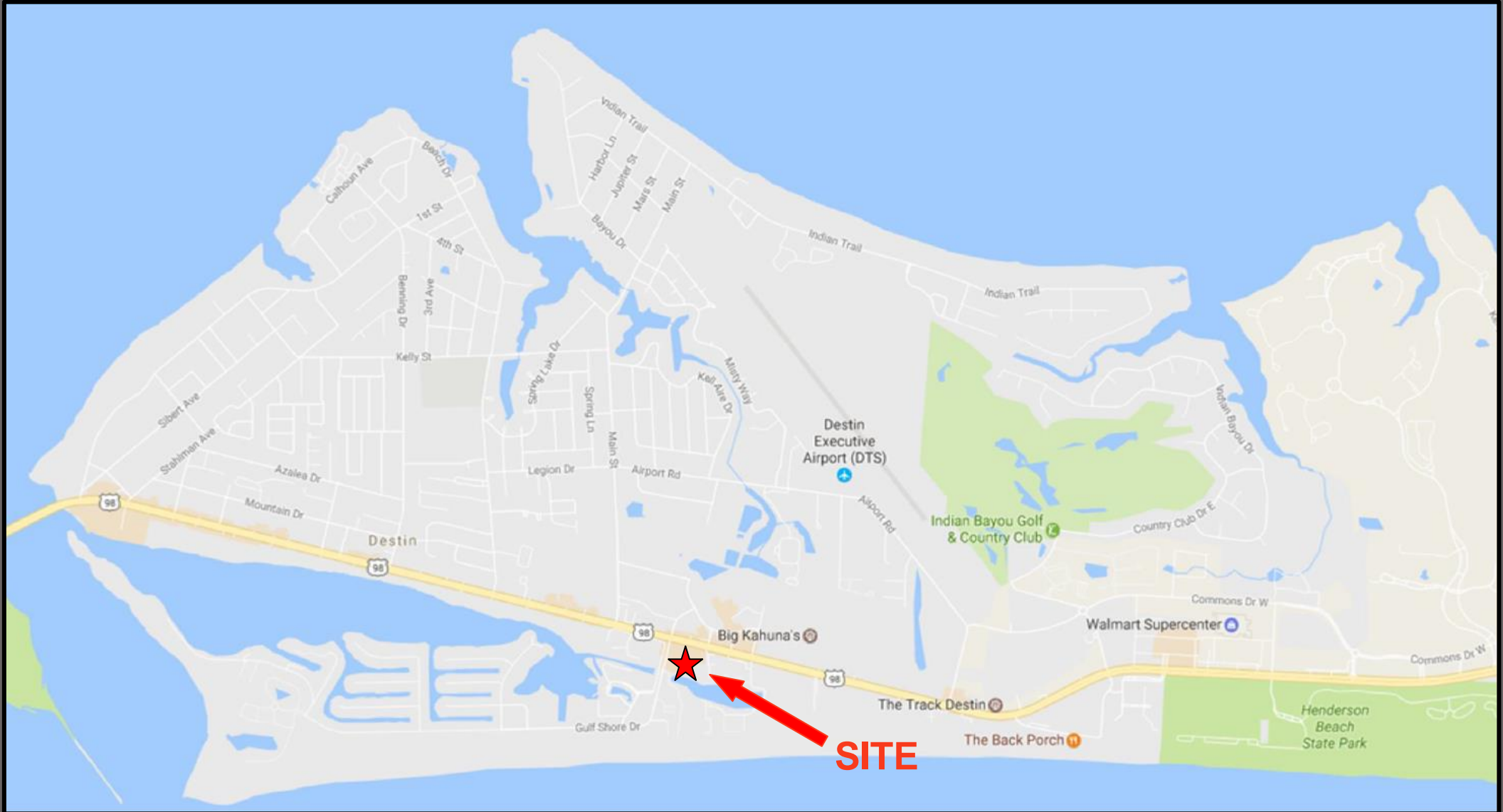


About the Center

- Shoreline Village is located conveniently at the intersection of Hwy. 98 and Gulf Shore Drive
 - 64,000+ VPD
 - Only 300 yards from the beach
- In the heart of the Destin community, Shoreline Village offers a unique blend of entertainment, office, retail, and restaurants for locals and tourists to enjoy
- The large courtyard and stage make this site a destination for musicians and performers
- Home to Capriccio's Café and Brick-a-Brac restaurant, both favorites among locals and visitors



Location Map





Aerial Photograph





Aerial Photograph





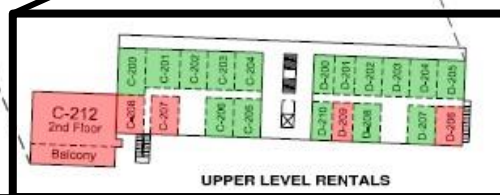
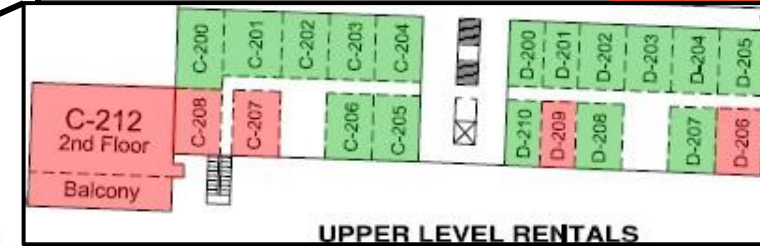
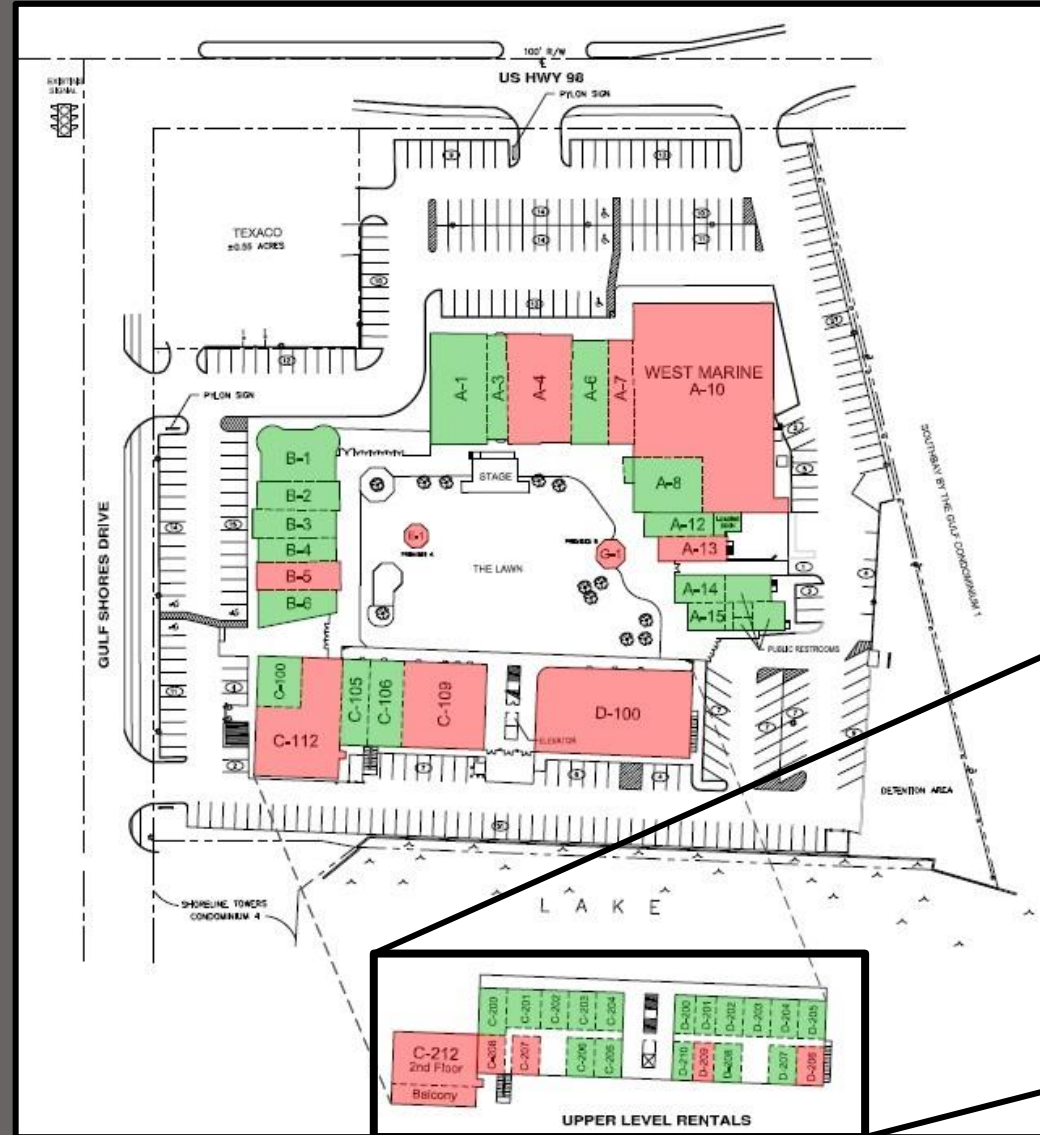
Available Space



= Available Space



= Current Occupants





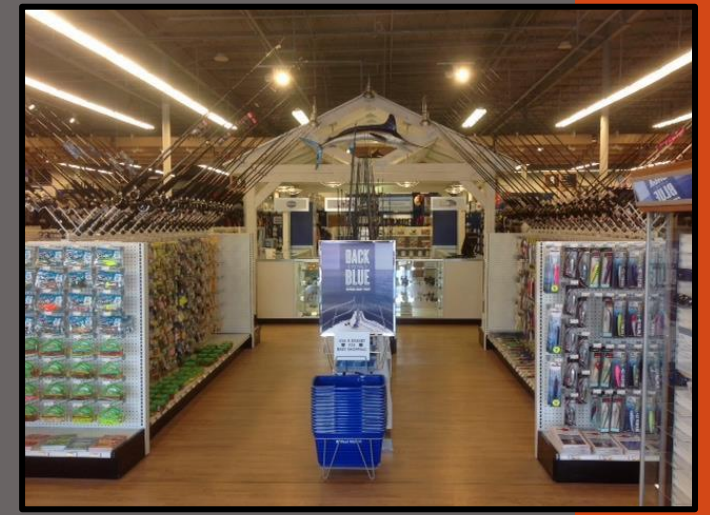
Area Demographics

Full Time Population (Non Tourist)

<u>Population</u>	<u>Destin</u>	<u>Okaloosa County</u>
Population:	12,305	180,822
Change Since 2000:	10.7%	11.1%
 <u>Households</u>		
Households:	5,449	72,442
 <u>Income</u>		
Median HHI:	\$66,758	\$54,242
Change Since 2000:	8.5%	18.6%
Avg. HHI:	\$82,427	\$70,065



Images





Contact Information

For more information please contact:
Elizabeth Poindexter
(205) 394-2543
Elizabeth@blackwaterresources.com